

**M.L.A.** - Construction Design  
Management Regulations 2015  
(CDM2015)



# CAPABILITY STATEMENT

November 2024



# CONTENTS

EXECUTIVE SUMMARY	3
OUR PROJECTS	4-5
OUR PARTNERS	6
CONTACT DETAILS	7

# EXECUTIVE SUMMARY

**Michael Lordan Associates (M.L.A.) have been working with construction clients, designers and contractors for over 10 years. We bring experience, expertise and pragmatism to our CDM 2015 support services, contributing to help shape and work within the spirit of the regulations.**

We work in partnership with all duty holders, supporting them to plan, design, manage and deliver their projects in line with CDM2015 and wider industry best practice.

Our CDM2015 support services are offered across England, London and in all surrounding counties to include Berkshire, Essex, Hampshire, Hertfordshire, Kent, Surrey and Sussex.

The M.L.A. team make CDM compliance simple, practical and cost effective.

## > CLIENT ADVISOR

M.L.A. will serve as your CDM Client advisor and ensure that your duties under the regulations are discharged.

When appointed, we ensure that our client receives professional and proportionate advice, that fellow duty holders are both competent and meet their own requirements, during both the design and construction phases.

M.L.A. will prepare and disseminate pre-construction information, notify the project (if applicable), review and approve the project Construction Phase Plan and conduct regular ongoing monitoring of the appointed Principal Contractor.

## > PRINCIPAL DESIGNER

M.L.A. provide industry leading Construction Design Management expertise when appointed as the Principal Designer under CDM2015. M.L.A. have been appointed in this role on projects ranging in value between £250k-£50 million. We have provided comprehensive and detailed support on a multitude of projects, including new build housing, commercial to residential, office refurbishment, light industrial, demolition and many more.

As Principal Designer, you can expect us to coordinate health and safety information in the pre-construction phase, collaborate and communicate with other duty holders, advise on design risk management and adopting the general principles of prevention within the design.

## > PRINCIPAL DESIGNER ADVISOR

As well as being appointed directly as the Principal Designer, M.L.A. also work in partnership with organisations e.g. architects, in an advisory and support capacity.

Our advisory services allow us to provide practical and real-world advice to both the Principal Designer and Designers, ensuring design risk are identified, eliminated or mitigated with proportionate control measures. We support the design team in focusing on ensuring the health and safety of those not just involved in the construction of a project, but also those who go onto work in or on the structure or building throughout its life cycle.

## > BUILDING SAFETY ACT (BSA) ADVICE

Whilst M.L.A. cannot act as the BSA Principal Designer, legally, it must be an individual or organisation with technical design competence. We can advise and support duty holders, in particular, clients in making the correct appointments. The differing duties of a CDM PD and BSA PD are clear, so be wary of CDM professionals offering both services.

# OUR PROJECTS



## OFFICE REFURBISHMENT – LONDON

### **Principal Designer:**

Adopting the role on behalf of the design and build contractor. This project included extensive structural alterations, a full refurbishment, roof terrace and improved fire design.



## CHANNEL 4 HQ – HORSEFERRY ROAD

### **Principal Designer Advisor:**

Structural glazing replacement, supporting an international contractor to comply with their duties as the appointed Principal Designer. This project involved the removal of the existing glazing façade and replacement. Substantial temporary works and bespoke lifting operations.



## NEW BUILD HOUSING – SUSSEX

### **Client advisor and Principal Designer:**

The planning, design and construction of 70 new homes in Sussex. Appointed by an established developer to coordinate health and safety information within the pre-construction phase and support the design team to eliminate or mitigate associated design risk with the development.

# OUR PROJECTS



## EDUCATION, CHANGE OF USE - NORTHAMPTON

### Principal Designer:

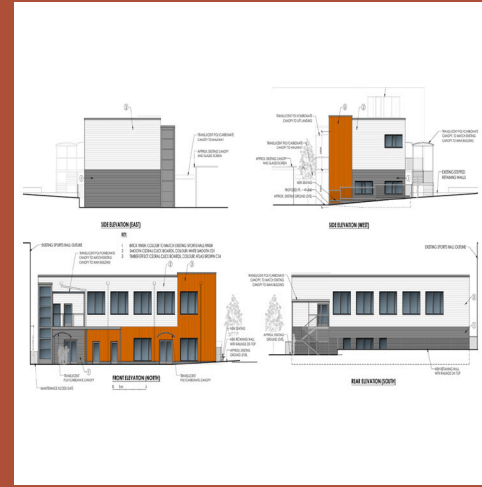
Working in partnership with a leading project management and architectural practice. Advising on design risk associated with the change in use and reconfiguration of an historic premises into a new education facility.



## HIGH END RESIDENTIAL REFURBISHMENT, WITHIN A HRB - LONDON

### CDM Principal Designer:

Adopting the role of CDM PD, working in partnership with the BSA PD (architect) on the refurbishment of a luxury dwelling within a registered HRB. Providing relevant information and support for the BSA Gateway 2 submission, pre-construction.



## EDUCATION, NEW BUILD - LONDON

### Client Advisor and Principal Designer:


Advising and coordinating on behalf of a London borough high school to ensure the safe planning, design and delivery of several new school buildings, inside and out of school term time.

# OUR CURRENT CDM PARTNERS






Please contact M.L.A. to begin discussing how we can support you to deliver your projects and comply with your duties under the CDM regulations.

 0203 375 3460

 office@ml-assoc.co.uk

 Suite A, Corinthian House,  
17 Lansdowne Road,  
Croydon, CR0 2NZ,  
United Kingdom

Get in touch:



[www.ml-assoc.co.uk](http://www.ml-assoc.co.uk)

